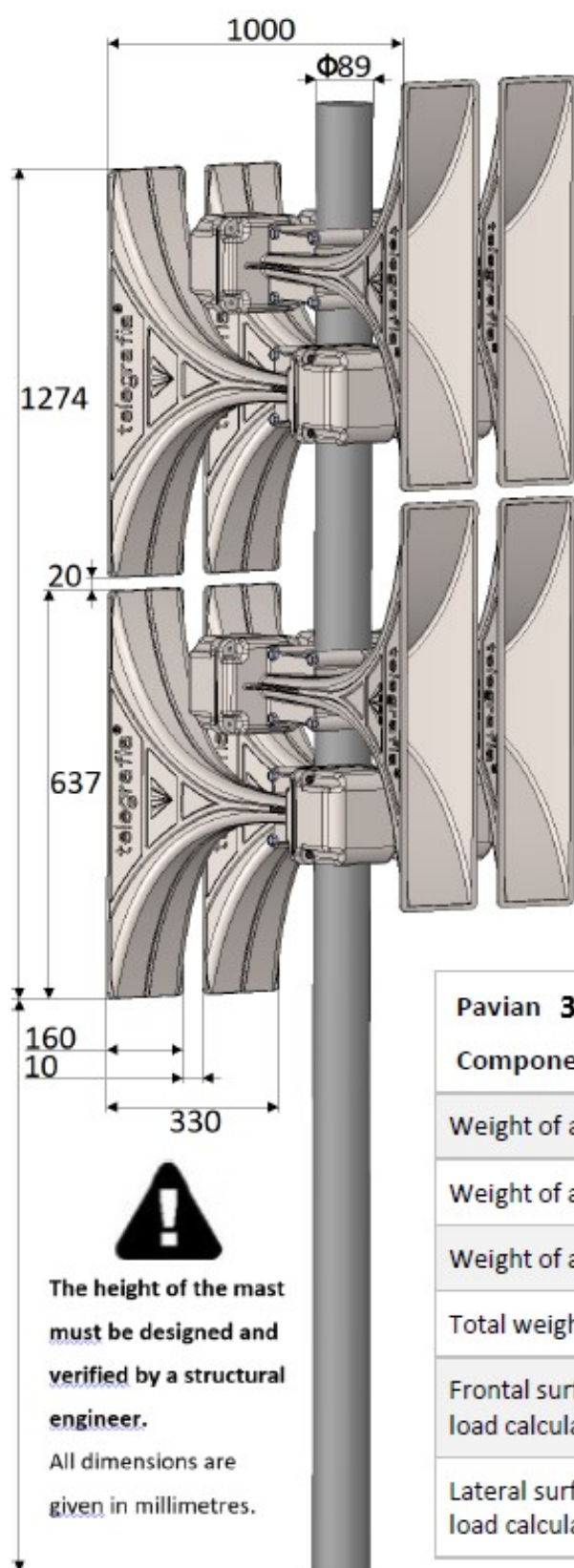


### 3.3 Loudspeaker Horn Dimensions



Pavian <b>3600W</b>	Units	Pcs.
<b>Component Parameters</b>		
Weight of a horn	9 Kg	24
Weight of an installation kit per horn	0.6 Kg	12
Weight of a protection net per horn		
Total weight (w/o a mast)	230,4 kg	1
Frontal surface area of a horn for wind load calculations	900 cm <sup>2</sup>	*
Lateral surface area of a horn for wind load calculations	1024 cm <sup>2</sup>	*